

BALI  
RIVIERA MAYA



# BALI

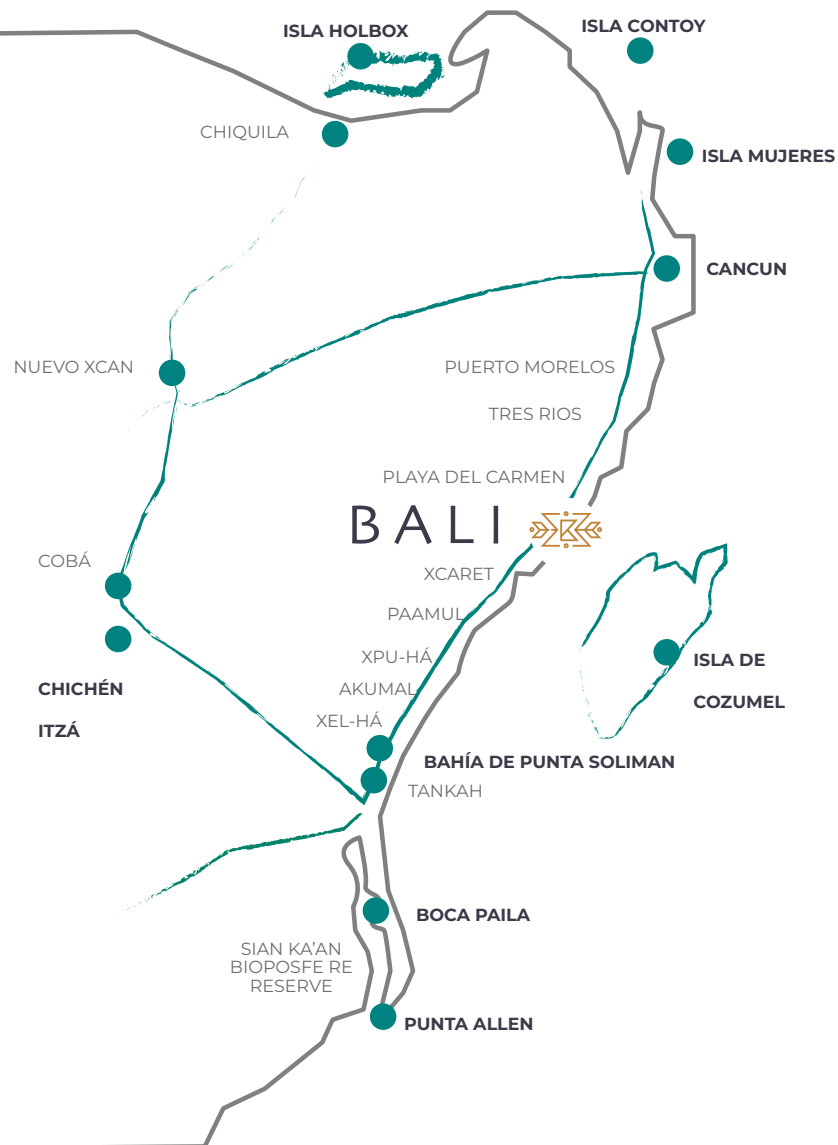
## LIFE IN PARADISE

Bali Lifestyle brings together everything you need in one place to enhance your well-being and quality of life. In addition to immersing yourself in the magic of the Riviera Maya, the development offers amenities and a Sports Club, all within a secure environment protected by two access filters, providing you with a strong sense of privacy.

[www.hulifestyle.mx](http://www.hulifestyle.mx)

# CONNECTED

WITH EVERYTHING



## RIVIERA MAYA

Discover one of the most famous reserves in the Riviera Maya. Here, you can choose from various activities where you will coexist with the region's flora and fauna.



# 115 SUR

MORE CONNECTED TO PLAYA DEL CARMEN

The construction work has begun to connect Bali Lifestyle with South 115th Avenue. This new roadway will improve mobility and connectivity within our community, allowing our residents to reach downtown Playa del Carmen faster and safer.

This new connection is an important step in ensuring that our residents enjoy a more comfortable and convenient life in Playa del Carmen.

# 115 SUR

MORE CONNECTED TO  
PLAYA DEL CARMEN

CENOTE CHAAK TUN

PLAYA PUNTA  
ESMERALDA

THE REEF  
COCO BEACH

LA QUINTA  
AVENIDA

PLAYA DEL  
CARMEN

PARQUE LOS  
FUNDADORES

CENTRO  
MAYA

PLAYACAR

BALI HU/LIFESTYLE

PLAYACAR  
BEACH

RINCON  
FAMILIAR

XPLOR

RÍO SECRETO

XENSES

HOTEL XCARET MÉXICO

PARQUE XCARET

COSTA DE LA  
RIVERA MAYA



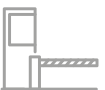
A PROJECT DESIGNED WITH YOU IN MIND





EXCLUSIVE

# GATED COMMUNITIES



SECURITY  
CHECKPOINT



OUTDOOR  
SWIMMING POOL



GREEN  
AREAS



CHILDREN'S  
PLAYGROUND



VISITOR PARKING



EQUIPPED  
PERGOLAS



BARBECUE GRILL



GRANITE BAR



PRIVATE  
BATHROOMS



OUTDOOR  
SHOWERS



SOCIAL AREA



BARBECUE GRILL



# EQUIPPED

## PERGOLAS

SPACIOUS AREAS AND  
EXCELLENT FINISHES

A photograph of a tennis court. In the foreground, a red and black tennis racket is leaning against a black net. A bright green tennis ball is on the green grass court surface near the racket. The background shows a blue tennis court surface and a green grassy area.

# SPORTS CLUB

EVERYTHING IN A SINGLE LOCATION



# TAKE YOUR NEW LIFESTYLE

TO THE NEXT LEVEL



PET PARK



CAFÉ



GAME ROOM



SWIMMING POOL



SUN LOUNGERS



YOGA STUDIO



7-A-SIDE SOCCER FIELD



BASKETBALL COURTS



TENNIS COURT



CHILDREN'S PLAYROOM



LADIES' AND MEN'S CHANGING ROOMS



CO-WORKING SPACE



MASSAGE AREA



PLAYGROUND



TRX GYM



RUNNING TRACK



CHILDREN'S POOL

Spaces created to exercise and unleash your full potential as you've always wanted.



# MODEL

HOUSES

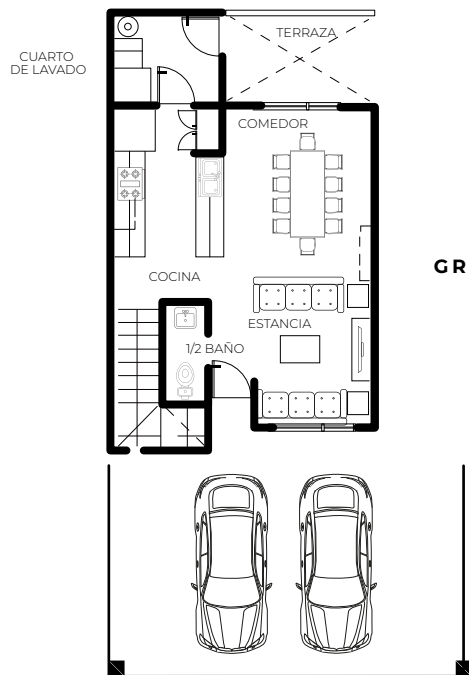
# RECINTO

MODEL



UP TO  
**123m<sup>2</sup>**

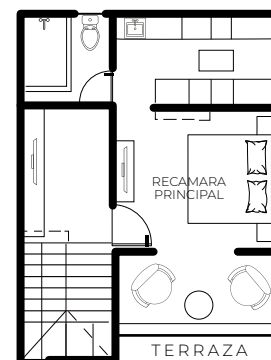




**GROUND FLOOR**



**FIRST FLOOR**

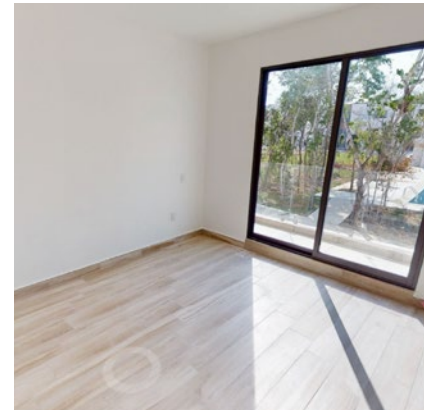


**SECOND FLOOR**

## ARCHITECTURE PLAN - **RECINTO**

# CROZET

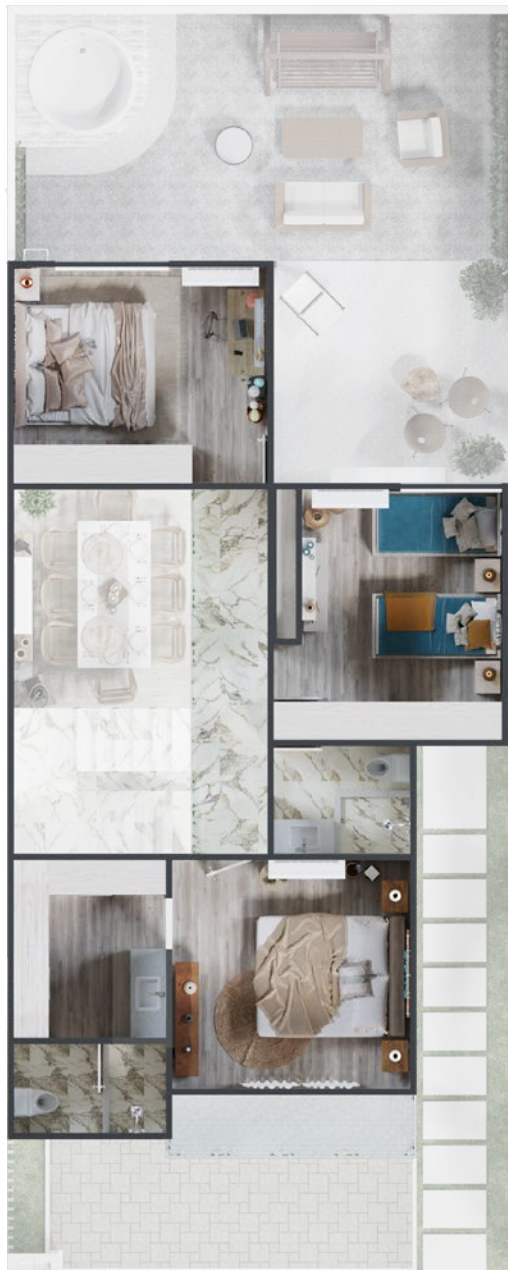
MODEL



UP TO  
**159m<sup>2</sup>**



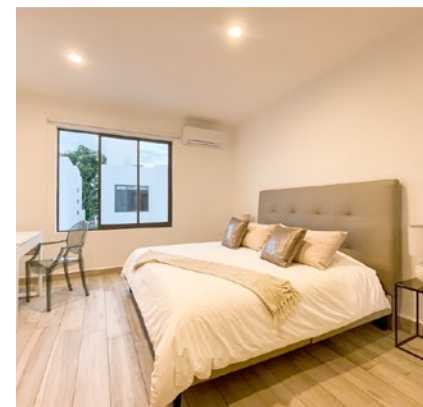
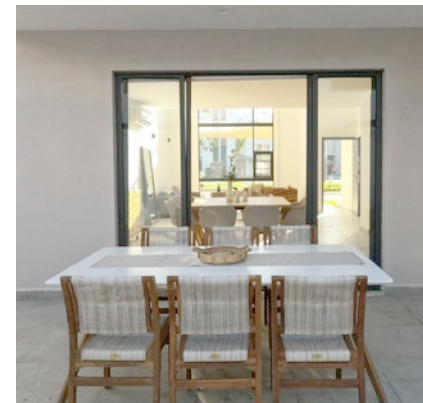
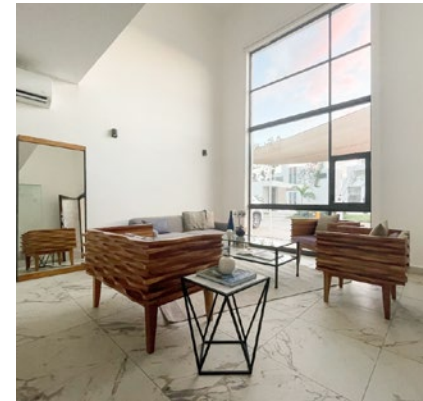
JACUZZI



## ARCHITECTURE PLAN - **CROZET**

# MONACO

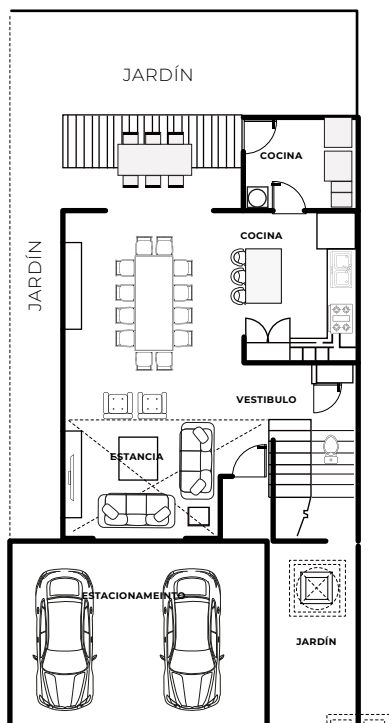
## MODEL



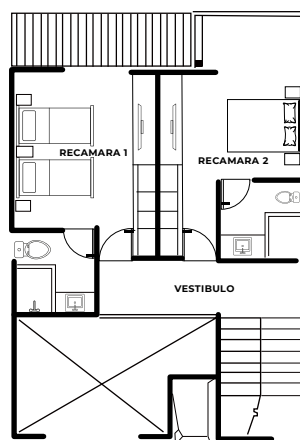
UP TO  
215m<sup>2</sup>



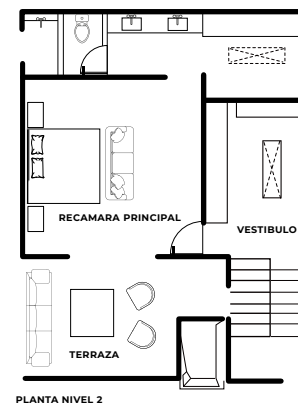
JACUZZI



GROUND FLOOR



FIRST FLOOR



SECOND FLOOR

# ARCHITECTURE PLAN - **MÓNACO**



# MODEL

APARTMENTS

## APARTMENTS

# BALI LIFESTYLE

Every stage that Bali Lifestyle has built always seeks improvements that can be made in the project, and this case was no exception. The carpentry and kitchen project was completely redesigned with dark granite tones and materials, giving it a much more elegant design.

**This property offers very comfortable environments with great potential, whether you are looking to invest, use it for family vacations, or have your first apartment in Playa.**

THE APARTMENTS WILL BE READY FOR YOU TO MOVE IN.



# BENOA

MODEL





-  ELEVATOR
-  SWIMMING POOL
-  PARKING
-  BARBECUE GRILL
-  GREEN AREAS

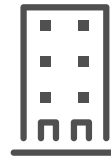
## APARTMENTS **BALI LIFESTYLE**

THE PROJECT OFFERS 3  
TYPES OF APARTMENTS WITH  
THE SAME LAYOUT.



### **BENOA GARDEN HOUSE**

*These are all the apartments located on the ground floor of the building.* The main benefit of these is that they have a private service patio and spacious private terraces with direct access to the green areas. The largest one measures 170 square meters.



### **BENOA**

*On the first, second, and third levels.* These apartments stand out for their balconies, where you will have spectacular views of the pool or the master condominium.



### **ROOFTOP**

*This apartment will have a private terrace on the second level,* allowing you to organize the best gatherings with views of the sunsets of the Riviera Maya. There will be only one rooftop in each of the towers.



[www.hulifestyle.mx](http://www.hulifestyle.mx)